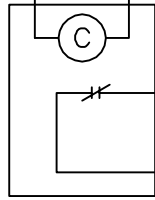


NORMAL POWER

Hot  
Neutral

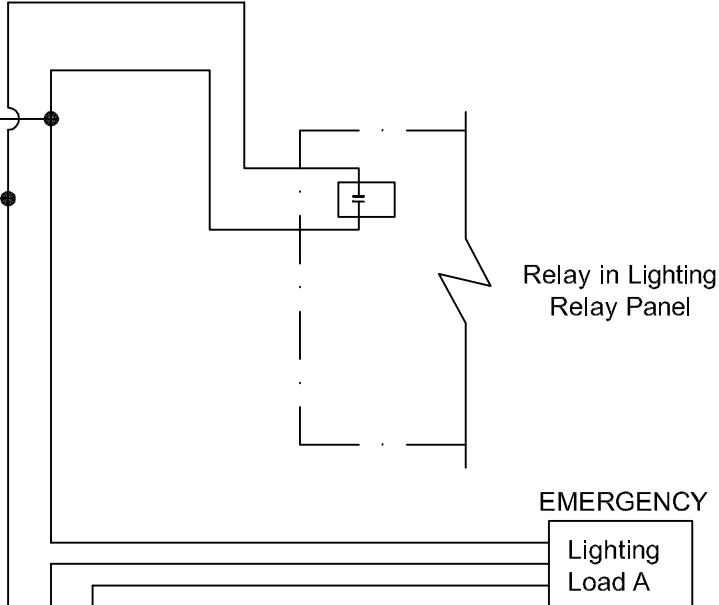


UL924  
BYPASS RELAY

When normal power drops, the coil becomes de-energized thereby closing the contacts to override the occupancy sensor circuit.

EMERGENCY POWER

Hot  
Neutral  
Ground



Relay in Lighting  
Relay Panel

EMERGENCY

Lighting  
Load A

LX Relay Panel, UL924 BYPASS



**Building Automation, Inc.**